

COMPUTER GENERATED DRAWING
MANUAL CHANGES PROHIBITED

NOTES:

- ALL DIMENSIONS ARE IN MM.
- MATERIAL:
 - WEDGES AND SHAFT ARE AL6061-T6.
 - SCREW, SQUARE WASHER, LOCK WASHER AND SPIRAL PIN ARE CORROSION RESISTANT STEEL.
- FINISH:
 - WEDGES AND SHAFT: SEE TABLE 1.
 - SCREW, SQUARE WASHER, LOCK WASHER AND SPIRAL PIN: PASSIVATED IN ACCORDANCE WITH AMS2700F.
- WEIGHT IS INDICATED IN TABLE 2.

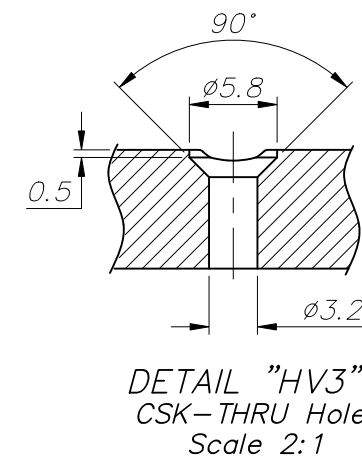
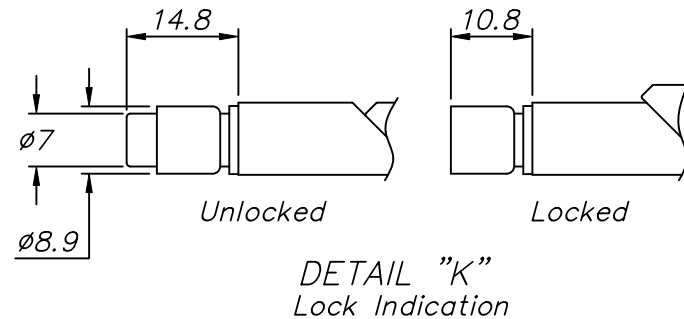


TABLE 2

ASSEMBLY LENGHT CODE	L ± 1	A	WEIGHT (gr)
072*	71.12	8.255	17.6
085*	83.82	14.605	20.1
099	96.52	20.955	22.6
112	109.22	27.305	25.1
125	121.92	33.655	27.6
138	134.62	40.005	30.1
150	147.32	46.355	32.6
163	160.02	52.705	35.1
173	172.72	59.055	37.6
187	185.42	65.405	40.1
200	198.12	71.755	42.6
212	210.82	78.105	45.1
225	223.52	84.455	47.6
230	228.60	86.995	48.6

*: THREE WEDGE DESIGN

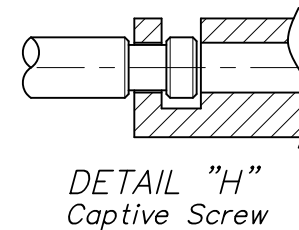
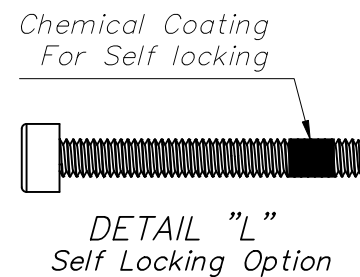
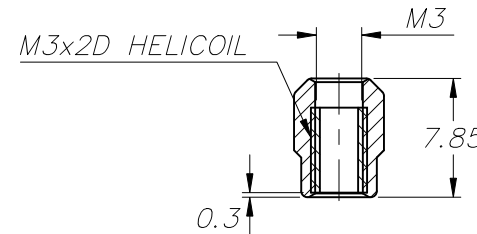
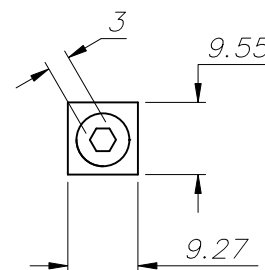
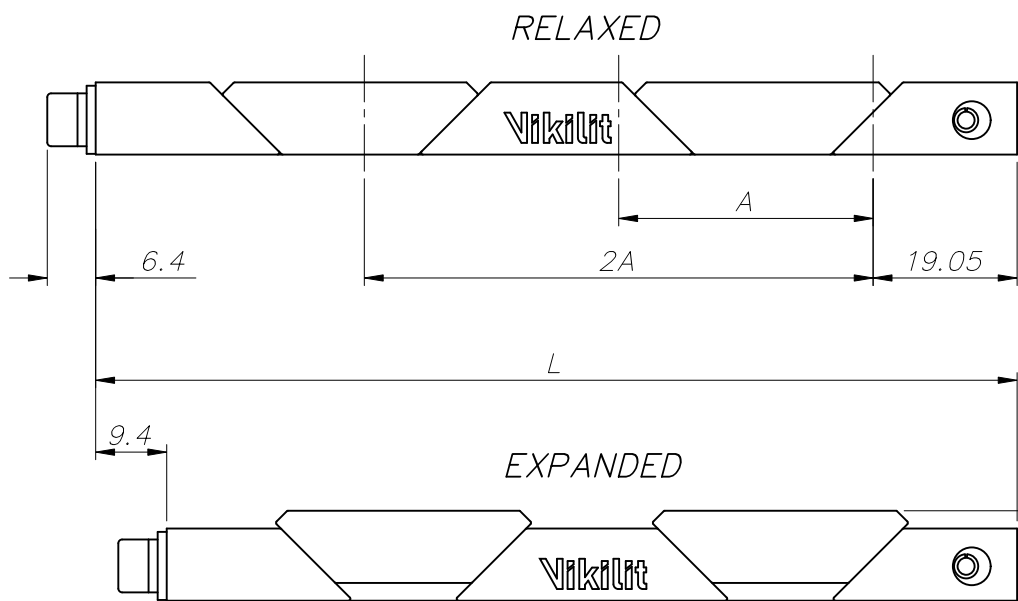
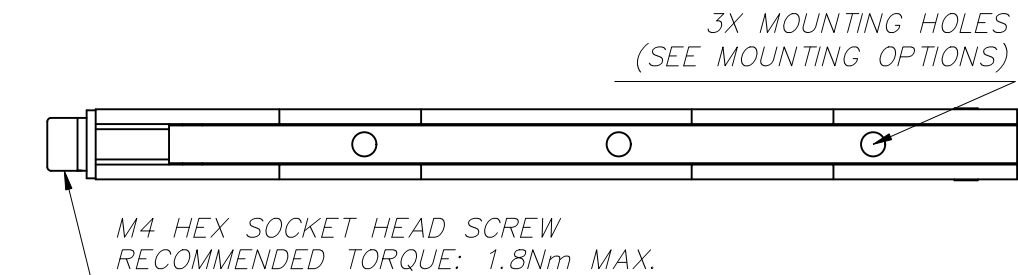


TABLE 1

V927 - K - H - EN - 125 - M30 - N

Options:

MANUFACTURER TYPE CODE _____

No Lock Indicator _____ B

Lock Indicator _____ (See Detail K) _____ K

Standard Screw _____ D

Captive Screw _____ (See Detail H) _____ H

Black Anodize per MIL-A-8625 Type II, Class 2 _____ A

Hard Black Anodize per MIL-A-8625 Type III, Class 2 _____ HA

Electroless Nickel per MIL-C-26074 Class 4, Grade B, Bright _____ EN

Chromate per MIL-DTL-5541, Class 1A, Yellow _____ C

Assembly Lenght Code _____ (See Table 2) _____

Mounting Options: M2.5x0.45 Tapped Hole _____ M25

M3x0.5 Tapped Hole _____ M30

Thru Hole (Detail "HV3") _____ (See Detail HV3) _____ HV3

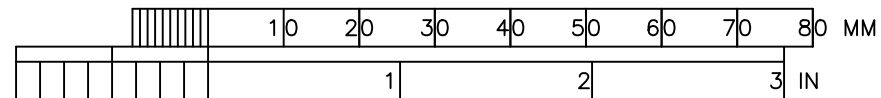
M3 HELICOIL INSERT _____ (See Detail HM3) _____ HM3

4-40 Tapped Hole _____ UN4

Self Locking Patch _____ (See Detail L) _____ L

None _____ N

PRINTS OF THIS DRAWING MAY BE REDUCED IN SIZE TO COMPARE WITH ORIGINAL, CHECK WITH SCALE BELOW.



UNLESS OTHERWISE SPECIFIED DIMENSIONS ARE IN MM		CONTRACT NO. --		Harp Savunma Sistemleri San. ve Tic. A.Ş. Bilkent Cyberpark, Cyber Plaza B Blok, No:216 Çankaya/Ankara	
TOLERANCES ON		DRAFTS			
FRACTIONS ±		DFT SUPV		V927 SERIES	
GENERAL X.X ±0.2		ENGR			
X.XX ±0.10		CHECK			
REMOVE ALL BURRS		APPD ME		SIZE FSCM NO. DWG NO.	
MATERIAL:		EE		A3 -- HARP-VK-105	
SEE NOTE 2		STAFF ENGR.		SCALE 1/1 UNIT mm	
FINAL PROTECTIVE FINISH:		QA/QC		SHEET 1 OF 1	
SEE NOTE 3		MFG(FAB)			
NEXT ASSY USED ON		PROD ENG			
APPLICATION					